



# INDOFINE Chemical Company, Inc.

121 Stryker Lane, Bldg. 30, Suite 1 • Hillsborough, NJ 08844 • U.S.A.

Phone: (908) 359-6778 • FAX: (908) 359-1179

website: [www.indofinechemical.com](http://www.indofinechemical.com)

e-mail: [chemical@indofinechemical.com](mailto:chemical@indofinechemical.com)

## CERTIFICATE OF ANALYSIS

Catalog Number: 19-384

Product Name: **2,6-DIMETHOXYPHENOL**

CAS Number: [91-10-1]

Lot Number: 0401030

Chemical Formula: C<sub>8</sub>H<sub>10</sub>O<sub>3</sub>

Molecular Weight: 154.17

Melting Point: 52-55°C

Appearance: Off white crystals

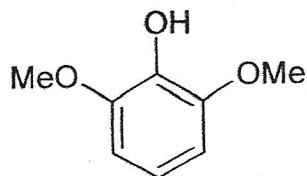
Solubility: Soluble in Chloroform

TLC: Hexane:Ethyl acetate (7:3)

NMR Spectrum: Enclosed (Confirms to the structure)

Storage: Cool dry place

Purity (HPLC): 98.6%





# INDOFINE Chemical Company, Inc.

121 Stryker Lane, Bldg. 30, Suite 1 • Hillsborough, NJ 08844 • U.S.A.

Phone: (908) 359-6778 • FAX: (908) 359-1179

website: [www.indofinechemical.com](http://www.indofinechemical.com)

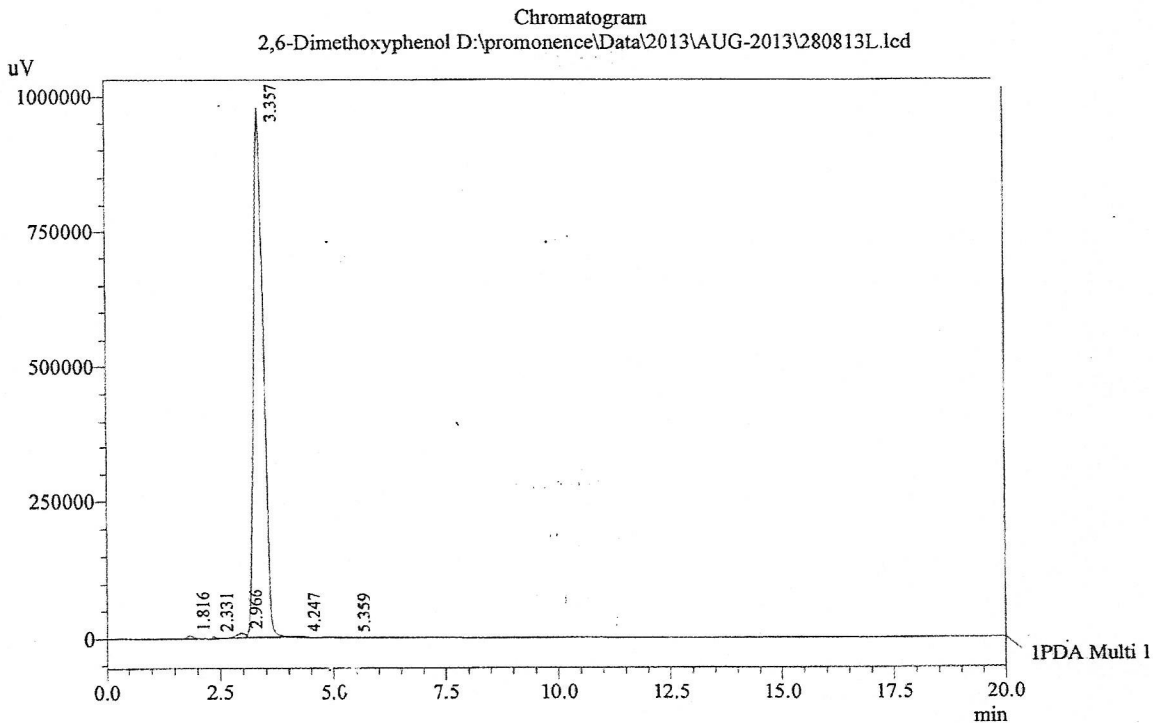
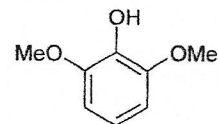
e-mail: [chemical@indofinechemical.com](mailto:chemical@indofinechemical.com)

## HPLC ANALYSIS

Acquired by : Sanjeev  
Sample Name : 2,6-Dimethoxyphenol  
Sample ID : Lot No: 0401030  
Injection Volume : 20 uL  
Data Filename : 280813L.lcd  
Method Filename : Linear Isocratic.M.lcm

Catalog No.: 19-384  
Product Name: 2,6-Dimethoxyphenol  
Lot No.: 0401030

Column : LUNA C-18(2), (250mm x4.6mm 5.0µ)  
Flow : 1.000 mL/min.  
Mobile Phase : A(70% of 0.1% OPA in water) B(70% of Acetonitrile)

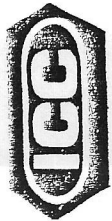


1 PDA Multi 1 / 230nm 4nm

PeakTable

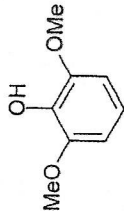
PDA Ch1 230nm 4nm

Peak#	Name	Ret. Time	Area	Area %	Relative Retention Time
1	RT:1.816	1.816	47988	0.33	0.54
2	RT:2.331	2.331	19939	0.14	0.69
3	RT:2.966	2.966	99451	0.68	0.88
4	2,6-Dimethoxyphenol	3.357	14317795	98.60	1.00
5	RT:4.247	4.247	22530	0.16	1.26
6	RT:5.359	5.359	13149	0.09	1.60
Total			14520852	100.00	



Indofine Chemical Company, Inc.  
121 STRYKER LANE  
BLDG. 30, SUITE 1  
HILLSBOROUGH, NJ 08844

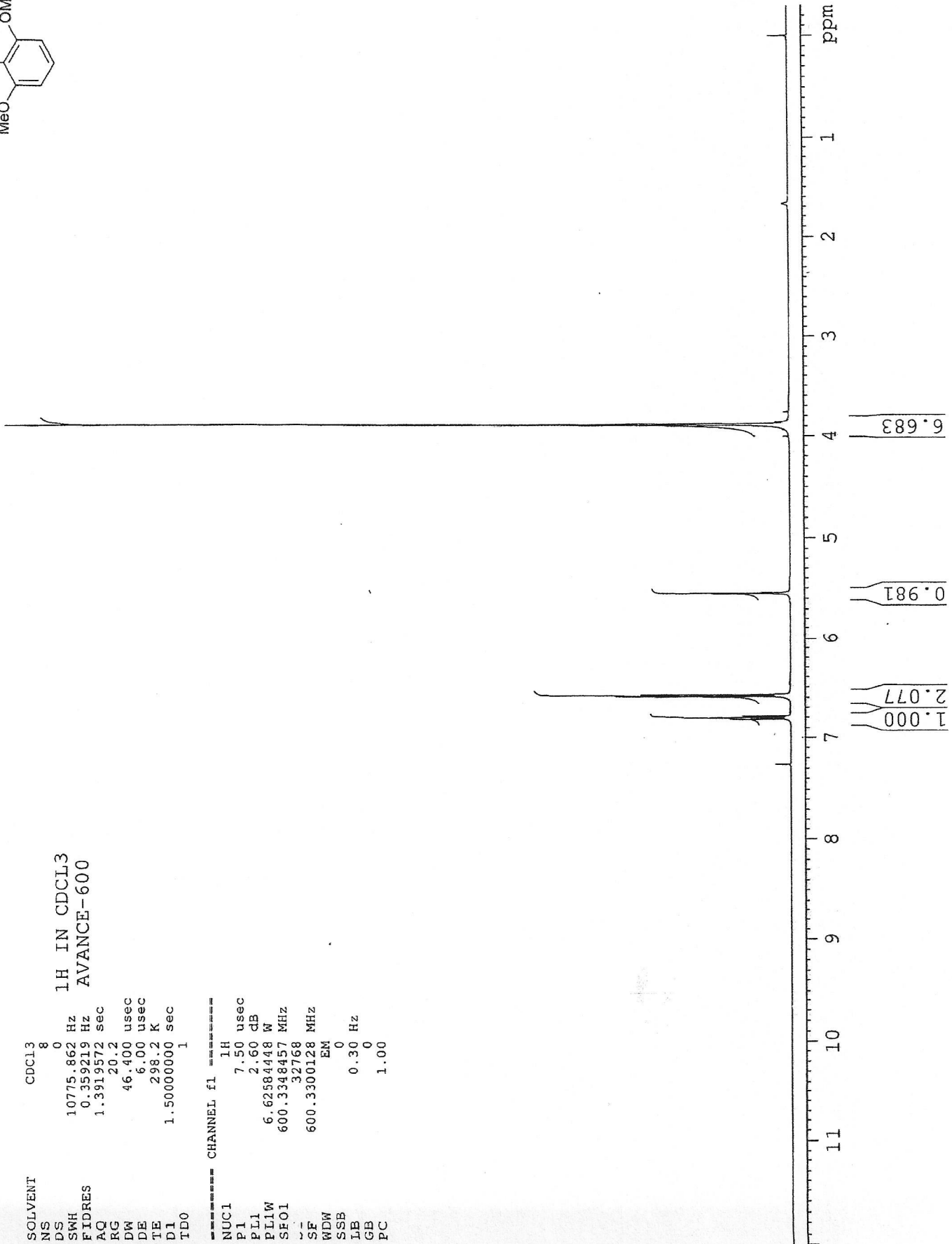
Catalog No.: 19-384  
Product Name: 2,6-Dimethoxyphenol  
Lot No.: 0401030



SOLVENT CDC13  
NS 8  
DS 0  
SWH 10775.862 Hz  
FIDRES 0.359219 Hz  
AQ 1.3919572 sec  
RG 20.2  
DW 46.400 usec  
DE 6.00 usec  
TE 298.2 K  
DI 1.50000000 sec  
TD0 1

1H IN CDCL3  
AVANCE-600

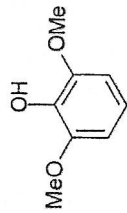
----- CHANNEL f1 -----  
NUC1 1H  
P1 7.50 usec  
PL1 2.60 dB  
PL1W 6.62584448 W  
SFO1 600.3348457 MHz  
SF 32768  
SF 600.3300128 MHz  
WDW EM  
SSB 0  
LB 0.30 Hz  
GB 0  
PC 1.00





INDOFINE Chemical Company, Inc.  
121 STRYKER LANE  
BLDG. 30, SUITE 1  
HILLSBOROUGH, NJ 08844

Catalog No.: 19-384  
Product Name: 2,6-Dimethoxyphenol  
Lot No.: 0401030



SOLVENT CDCL3  
NS 8  
DS 0  
SWH 10775.862 Hz  
FIDRES 0.359219 Hz  
AQ 1.3919572 sec  
RG 20.2  
DW 46.400 usec  
DE 6.00 usec  
TE 298.2 K  
D1 1.50000000 sec  
TDO 1

1H IN CDCL3  
AVANCE-600

==== CHANNEL f1 =====  
NUC1 1H  
P1 7.50 usec  
PL1 2.60 dB  
PL1W 6.62584448 W  
SF01 600.3348457 MHz  
SI 32768  
SF 600.3300128 MHz  
WDW EM  
SSB 0  
LB 0.30 Hz  
GB 0  
PC 1.00

